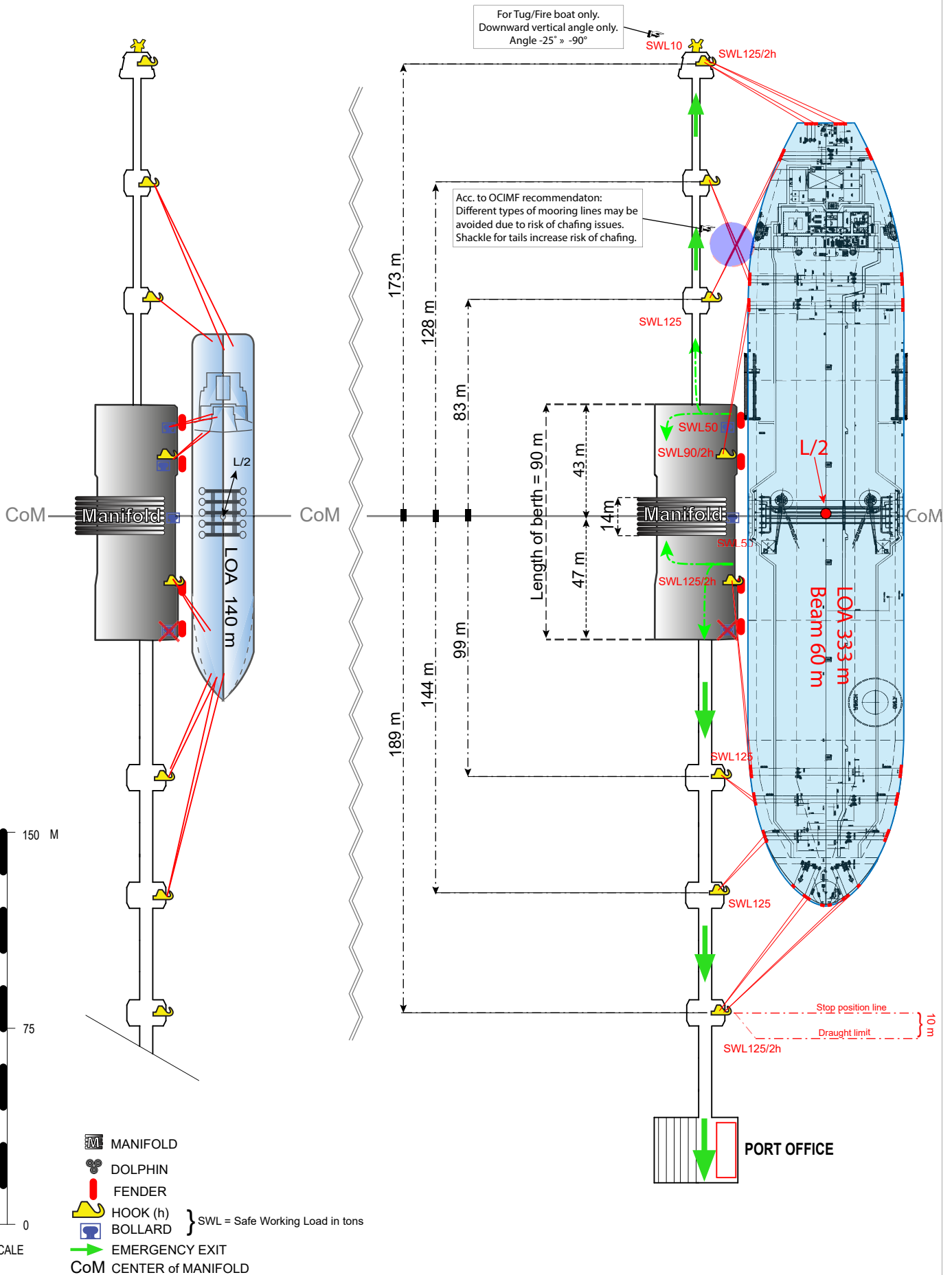


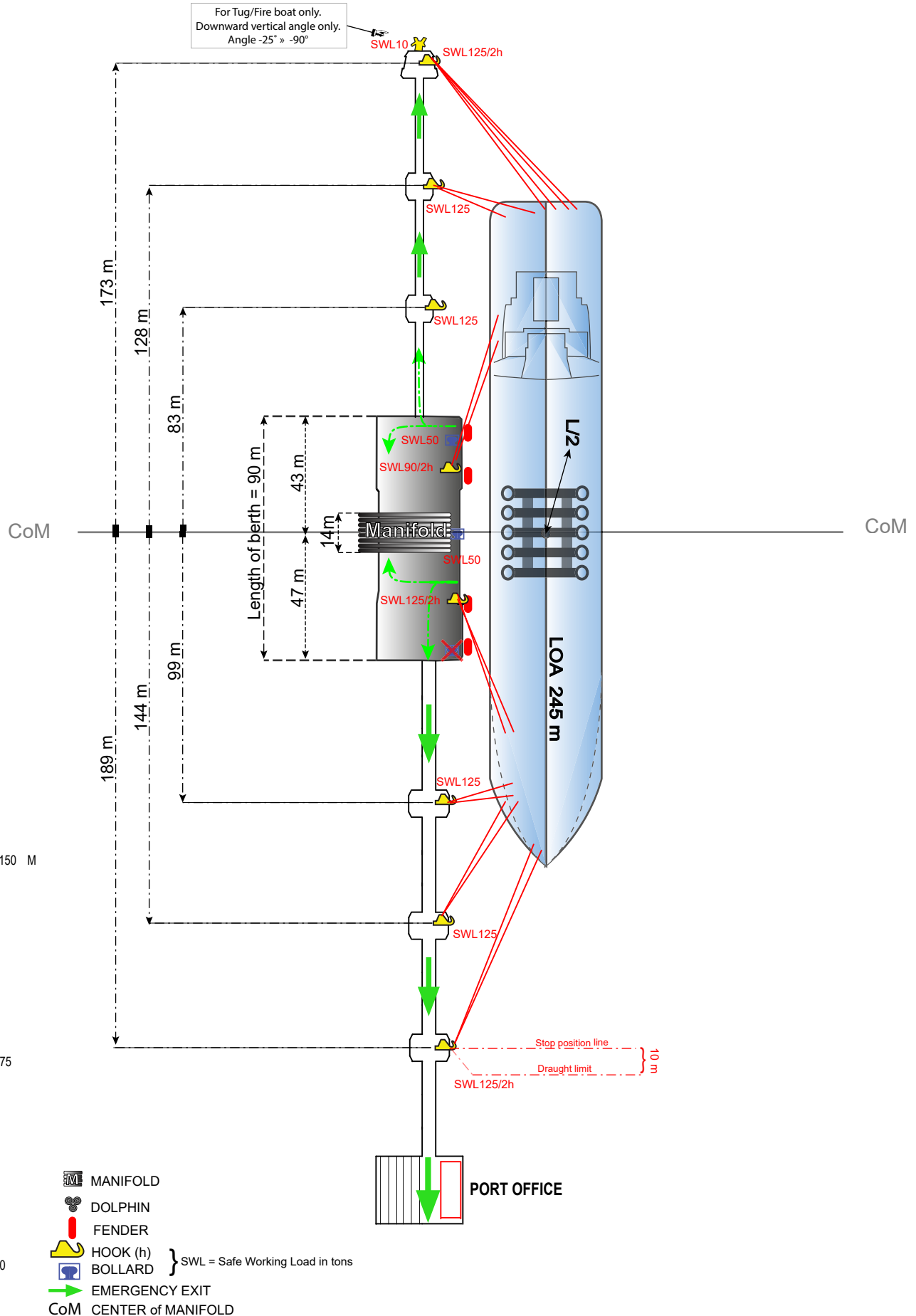
BERTH 801

MAX DRAUGHT (MW):	19.05 M	MAX/MIN MANIFOLD HEIGHT	
MAX LOA:	335 M	ABOVE WATERLINE (MW):	25.0/4.0 M
MAX BREADTH:	N/A	QUAY DECK HEIGHT (MW):	4.5 M
UKC:	1.45 M	MAX DIST. STERN TO CoM:	170 M
DEPTH (MW):	20.50 M	MAX DISPLACEMENT:	358000 T
MIN PARALLELL BODY:	50 M	MAX SPEED:	0.05 M/S
MIN FREEBOARD (MW):	3.7 M		

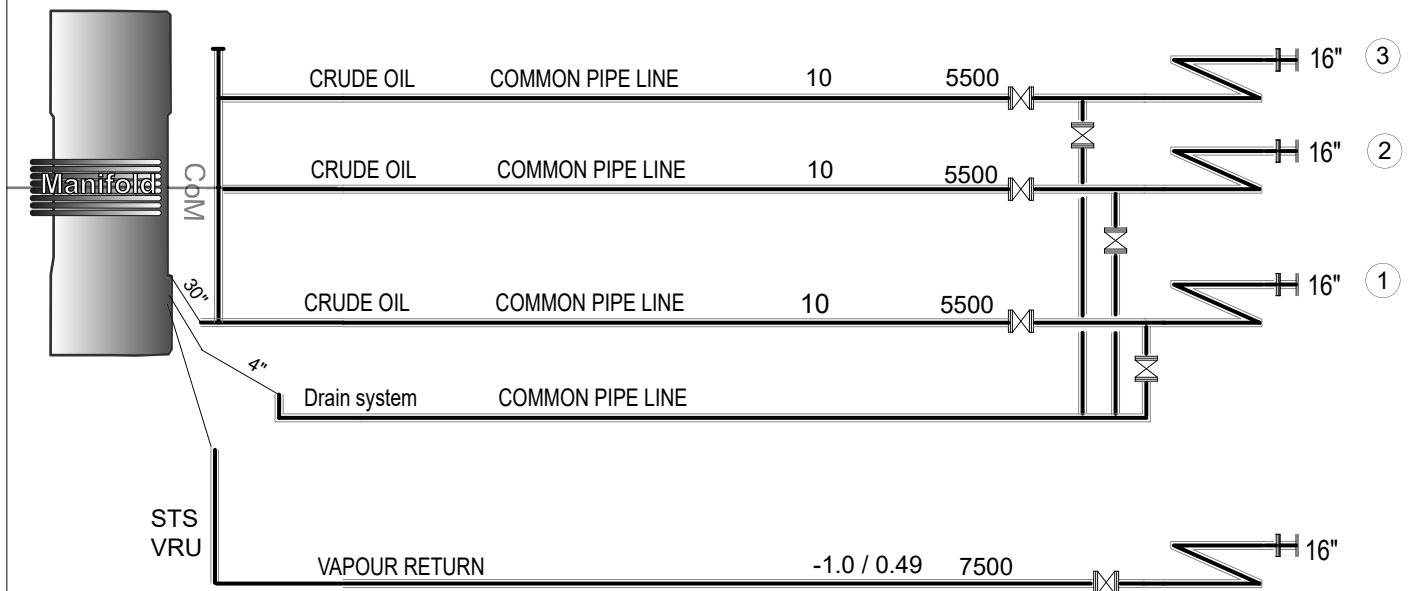




BERTH 801

MAX DRAUGHT (MW):	19.05 M	MAX/MIN MANIFOLD HEIGHT	
MAX LOA:	335 M	ABOVE WATERLINE (MW):	25.0/4.0 M
MAX BREADTH:	N/A	QUAY DECK HEIGHT (MW):	4.5 M
UKC:	1.45 M	MAX DIST. STERN TO CoM:	170 M
DEPTH (MW):	20.50 M	MAX DISPLACEMENT:	358000 T
MIN PARALLELL BODY:	50 M	MAX SPEED:	0.05 M/S
MIN FREEBOARD (MW):	3.7 M		



PRODUCT	COMPANY	MAX PRESSURE BAR	MAX LOADING/DISCHARGING CAPACITY M3/H	SIZE OF CONN.	HARD ARM No.
---------	---------	---------------------	--	---------------	--------------------



- ① = Hard arm No.
-  = Hard arm symbol
-  = Hose symbol

Bunkers available by barge
Fresh water available